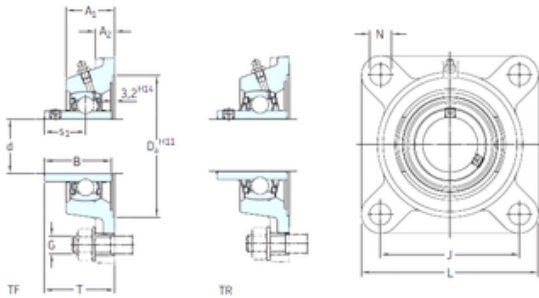


SKF FYJ 1.1/2 TF unit é s de roulement

Bearing No. FYJ 1.1/2 TF



FYJ 1.1/2 TF Bearing 2D drawings and 3D CAD models

Bore Diameter	38,1 mm
Width	49,2 mm
d	38,1 mm
s1	30,2 mm
A1	36 mm
B	49,2 mm
G	14 mm
J	102 mm
L	130 mm
T	51,2 mm
A2	16 mm
Weight	1,95 Kg
Basic dynamic load rating (C)	30,7 kN
Basic static load rating (C0)	19 kN
Fatigue load limit (Pu)	0,8
Housing material	Cast iron
D _a	115.9 mm
D _{b1}	99 mm
D _{b2}	107 mm
A	36 mm
A ₁	14 mm
A ₃	3.2 mm
N	16 mm
s ₁	30.2 mm
R _G	1/4-28 UNF
R ₁	23 mm



Produit composite portant CORP.

D_N	6.5 mm
SW_N	7 mm
G_N	1/4-28 SAE-LT
J_6	118 mm
J_7	34 mm
N_4	4 mm
Basic dynamic load rating C	30.7 kN
Basic static load rating C_0	19 kN
Fatigue load limit P_u	0.8 kN
Limiting speed	4800 r/min
Mass bearing unit	1.75 kg
Thread grub screw G_2	5/16-24 UNF
Hexagonal key size for grub screw N	3.969 mm
Recommended tightening torque for grub screw	6.5 N · m
Recommended diameter for attachment bolts, mm G	14 mm
Recommended diameter for attachment bolts, inch G	0.5625 in